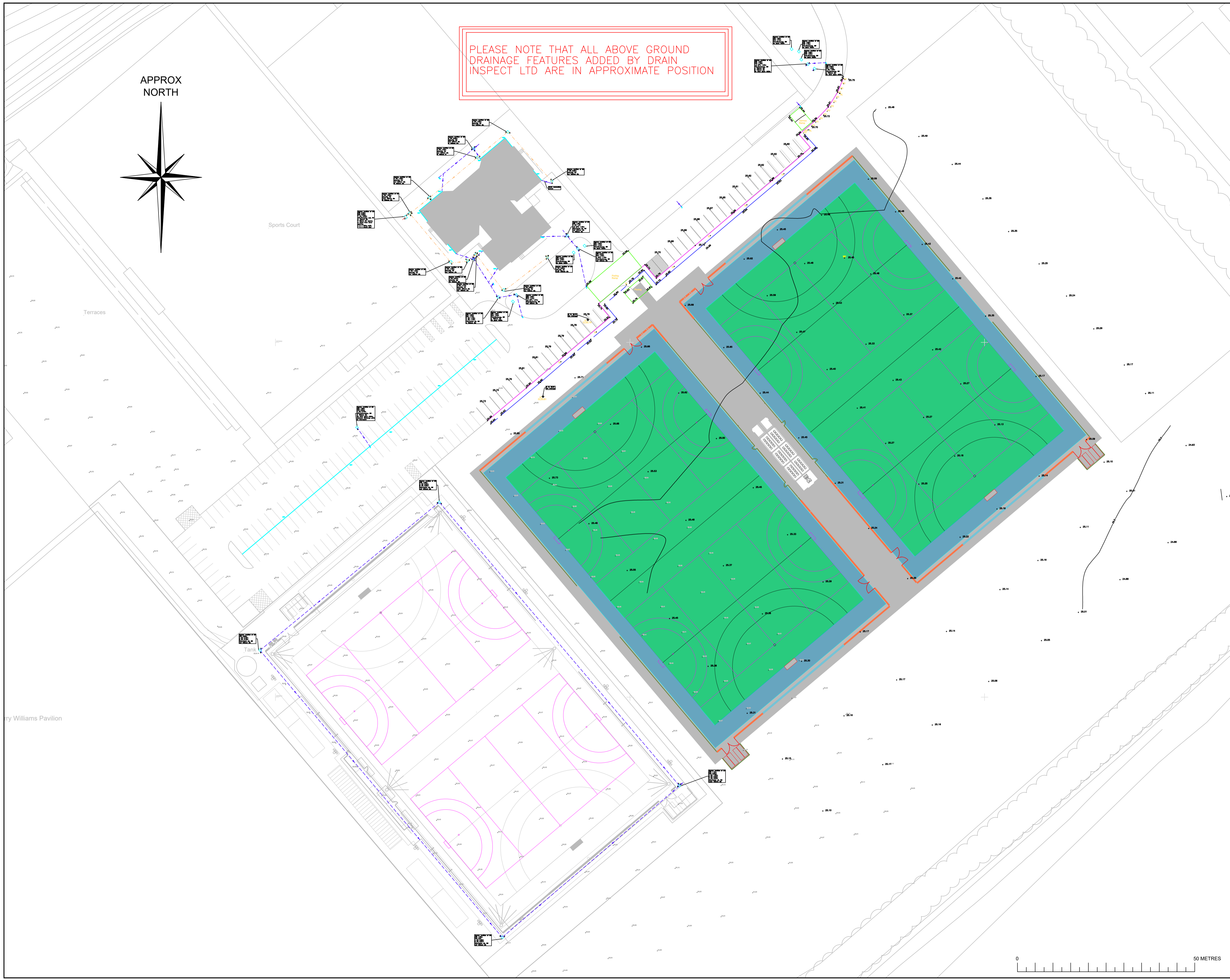
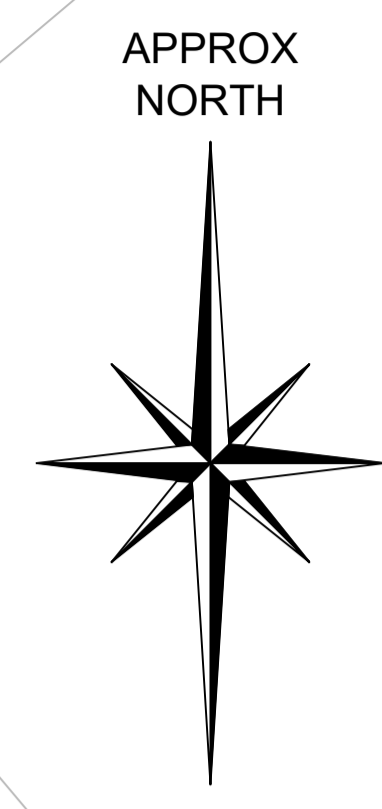


PLEASE NOTE THAT ALL ABOVE GROUND DRAINAGE FEATURES ADDED BY DRAIN INSPECT LTD ARE IN APPROXIMATE POSITION



- NOTES**
1. BACKGROUND PLAN INFORMATION IS BASED ON TOPOGRAPHIC SURVEY DATA CREATED BY OTHERS AND SUPPLIED TO US FOR THE PURPOSES OF PRESENTING OUR SURVEY OUTPUT. WE CANNOT BE HELD RESPONSIBLE FOR THE CONTENT, COMPLETENESS AND ACCURACY OF DATA CREATED BY OTHERS.
 2. THIS DRAWING IS TO BE READ IN CONJUNCTION WITH ALL OTHER RELEVANT DRAWINGS/DOCUMENTATION. PLEASE REFER TO TOPOGRAPHIC SURVEY DRAWING: GBS 1591 107 Proposed Topo Site Plan.dwg
 3. DO NOT SCALE FROM THIS DRAWING.
 4. IF IN DOUBT ASK.
 5. OS COPYRIGHT
- REPRODUCED FROM THE ORDNANCE SURVEY MAP WITH THE PERMISSION OF THE CONTROLLER OF HER MAJESTY'S STATIONERY OFFICE, CROWN COPYRIGHT, DRAIN INSPECT UK L15
 7 COLWICK QUAYS BUSINESS PARK, ROAD NO. 2 NOTTINGHAM, NG4 2JY
 DRAIN INSPECT UK L15 OWNS THE COPYRIGHT OF THIS DRAWING. THEIR WRITTEN CONSENT MUST BE OBTAINED BEFORE THIS DRAWING OR USED FOR ANY PURPOSE OTHER THAN THE ONE FOR WHICH IT WAS SUPPLIED.

DRAINAGE / CCTV LEGEND

	FULL SEWER
	SURFACE WATER SEWER
	COMBINED SEWER
	RISING MAIN
	ASSUMED ROUTES
	SERVICES TAKEN FROM RECORDS
	UTILITIES COMMENT BOX
	DEPTH TO SERVICE (m)

INFORMATION SHOWN AS TFR HAS NOT BEEN PROVEN ON SITE

UTILITIES ABBREVIATIONS

10 IC	1 DUCT 5 CABLES	DTS	DEPTH TO SOFIT
AR	ASSUMED ROUTE	ED	EXTERNAL BACKDROP
ACF	ASSUMED CONNECTION POINT	EOT	END OF TRACE
CB	CONCRETE BENCHING	FW	FULL WATER SEWER
CC	CIRCULAR BRICK CHAMBER	IO	INTERNAL BACKDROP
CDP	CABLE DRAW FIT	IL	INVERT LEVEL
CL	CORNER LEVEL	PC	PRECAST CONCRETE CHAMBER
CPC	CIRCULAR PLASTIC CHAMBER	PE	PLASTIC BENCHING
CP	DOWN LEVEL	REC	RECTANGULAR BRICK CHAMBER
DO	DEPTH TO CROWN	RC	RECTANGULAR CONCRETE CHAMBER
DM	DIAMETER	SW	SURFACE WATER SEWER
DTB	DEPTH TO BASE	TFR	TAKEN FROM RECORDS
DTL	DEPTH TO LIFT	UL	UNABLE TO LIFT
DTW	DEPTH TO WATER	UTS	UNABLE TO SURVEY
		UTT	UNABLE TO TRACE

AVAILABILITY OF STATUTORY UNDERTAKERS RECORDS DRAWINGS

TYPE	COMMENTS	TYPE	COMMENTS
COMBINED	NO	SITE RECORDS	NO
FULL	NO	AS BUILT	NO
RISING MAIN	NO	SITE SPECIFIC	NO
SURFACE	NO	OTHER	NO

SERVICE LOCATION

ELECTROLOCATION AND/OR GROUND PROBING RADAR (GPR) TECHNIQUES HAVE BEEN USED TO LOCATE UNDERGROUND SERVICES. THESE ARE EXPLANATIONS OR DATA ARE CARRIED OUT TO CONFIRM IDENTIFICATION, LOCATION AND DEPTH. AVAILABLE SERVICE RECORDS FROM OTHERS, THE COMPLETENESS OF INFORMATION SUPPLIED TO AND BY DRAIN INSPECT UK LTD CANNOT BE GUARANTEED.

IT SHOULD BE NOTED THAT CERTAIN TYPES OF SERVICES, SUCH AS PLASTIC OR GPR DO NOT TRACK SUCH GROUND WIRING, INCLUDING DEPTHS AND RECORDS TO THE LOCATION OF THESE SERVICES. EITHER RECORDS DRAWINGS SHOULD BE SOUGHT OR AN ALTERNATIVE MEANS OF OBTAINING THE INFORMATION USED.

DEPTHS OBTAINED USING GEOPHYSICAL TECHNIQUES SUCH AS GROUND PROBING RADAR ARE AFFECTED BY GROUND CONDITIONS THEREFORE MUST BE VIEWED AS INDICATIVE ONLY. NUMBERS OF CABLES IN RUNS ARE NOT DETERMINED UNLESS SPECIFICALLY IDENTIFIED OTHERWISE SHOWN.

DEPTHS TO TRACE METALLIC PIPEWORK REFER TO PIPE CENTRE.

PIPE RUNS ARE ASSUMED STRAIGHT BETWEEN CHAMBERS UNLESS OTHERWISE INDICATED.

ALL SERVICES ARE UNDERGROUND EXCEPT WHERE INDICATED.

PLEASE NOTE THAT DRAIN INSPECT UK LTD ARE NOT PERMITTED TO UNDERTAKE ANY TELECOMMUNICATIONS ANALYTICS, OTHER THAN EXISTING EXPOSED FEATURES. THEREFORE THIS INFORMATION MAY NOT APPEAR ON SURVEY DRAWINGS.

A FULL SET OF DRAIN INSPECT UK LTD TERMS AND CONDITIONS IS AVAILABLE ON REQUEST.

INFORMATION SHOWN AS TFR HAS NOT BEEN PROVEN ON SITE.

PLEASE NOTE OUR CAD LAYERING CONVENTION CONTAINS FURTHER INFORMATION. IT IS INTENDED THAT THIS DRAWING BE REPRODUCED IN COLOUR.

- GENERAL**
- NO ALLOWANCE HAS BEEN MADE FOR SUB SURFACE ENTRY INTO MANHOLES OR OTHER CHAMBERS OR VOIDS BELOW GROUND LEVEL. THEREFORE ANY DETAILS RELATING TO DEPTHS, SIZES ETC. ARE TAKEN FROM ABOVE GROUND AND AS SUCH WILL BE APPROXIMATE ONLY.
 - THE CONTRACTOR IS TO CHECK AND VERIFY ALL CRITICAL DIMENSIONS AND LEVELS BEFORE WORK STARTS.
 - BURIED SERVICES SHOWN ON THIS DRAWING MAY BE ASSUMED ROUTES AND WILL NORMALLY BE OF UNKNOWN CONDITION. CONTRACTORS SHOULD UNDERTAKE SUITABLE VALIDATION WORK AND TAKE PARTICULAR CARE DURING EXCAVATION WORK. SAFE DIGGING PRACTICES SHOULD BE FOLLOWED.
 - SHOULD THERE BE ANY CONFLICT BETWEEN THE DETAILS INDICATED ON THIS DRAWING AND THOSE INDICATED ON OTHER DRAWINGS, THEN DRAIN INSPECT UK LTD SHOULD BE INFORMED PRIOR TO CONSTRUCTION ON SITE.
 - IT IS IMPORTANT TO NOTE THAT THE SAME ACCURACIES IMPLIED BY THE PLOTTING SCALE ARE EQUALLY APPLICABLE TO DIGITAL DATA SUPPLIED FOR CAD.
 - EVERY EFFORT IS MADE TO IDENTIFY ALL VISIBLE ABOVE GROUND FEATURES. HOWEVER, IT SHOULD BE BORNE IN MIND THAT THERE MAY BE ITEMS OBSERVED AT THE TIME OF SURVEY WHICH ARE NOT REPRESENTED IN THIS DRAWING.
 - VISIBLE FEATURES IN THE VICINITY OF THE BOUNDARIES, AS SHOWN ON THIS SURVEY, MAY NOT REPRESENT THE EXTENT OF LEGALLY CONVEYED OWNERSHIP.
 - UNLESS OTHERWISE SPECIFIED FEATURES SHOWN USING LINE STYLES OR HATCHING ARE INDICATIVE ONLY. SUCH AS, ROAD MARKINGS, HEDGE CENTERLINES, BRICK HATCHING AND GLAZING DETAIL.

DESCRIPTION	REV	DATE	DRWN	CHKD	APPR

DRAWING STATUS INFORMATION



CLIENT

PROJECT TITLE

DRAWING DETAIL

CONNECTIVITY DRAINAGE SURVEY AS OF 11/05/2018

DRAWN	PK	DATE	MAY 2018
PROJECT ENGINEER	PK	SCALE	1:500 (WHEN PLOTTED @ A1)
CHECKED	dp		
APPROVED	MS		
DRAWING NUMBER	DIUK-1025_01	REVISION	

